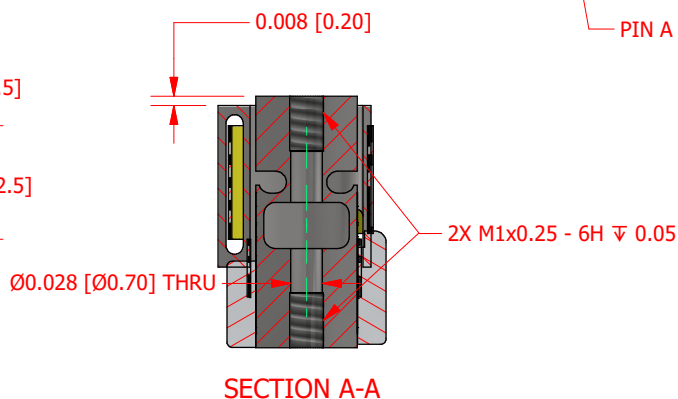
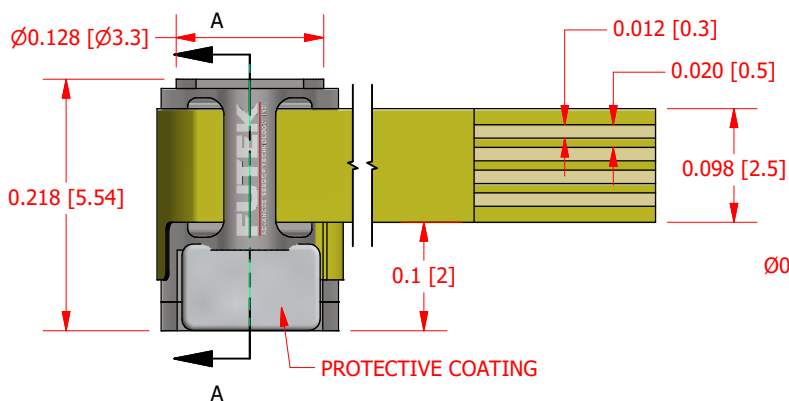
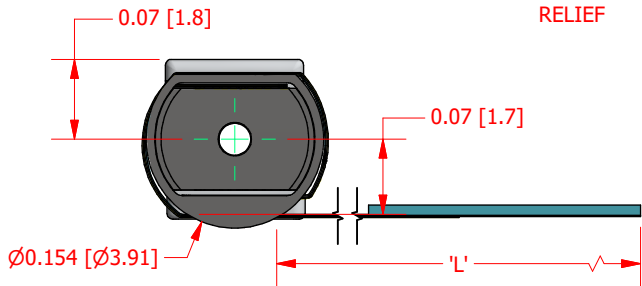
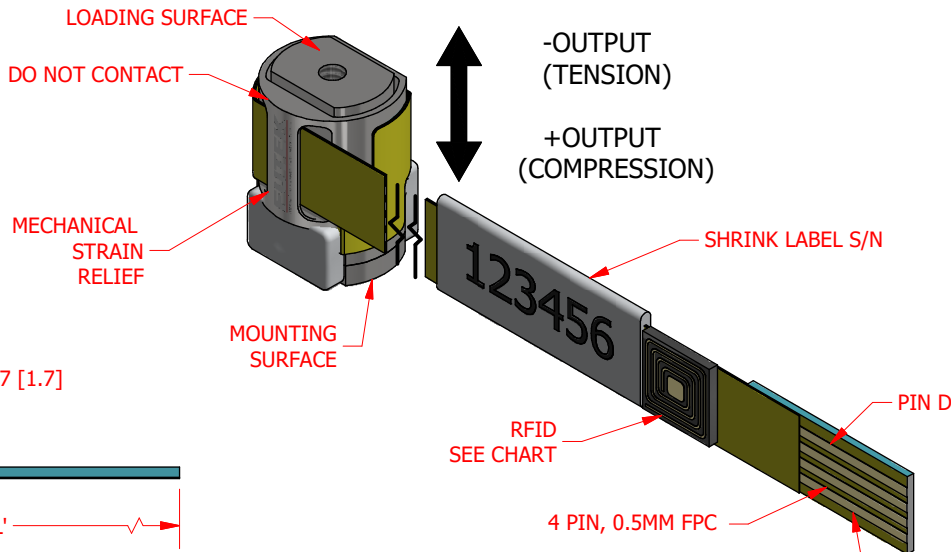


FUTEK MODEL QLA414 NANO IN-LINE THRU HOLE LOAD CELL

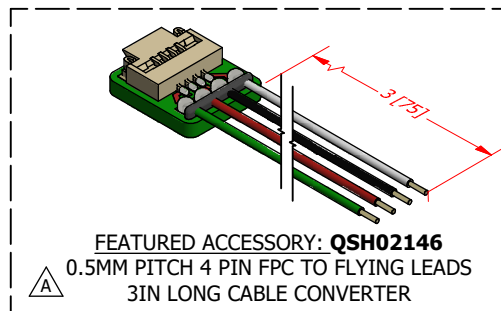
ITEM NUMBER: SEE CHART

INCH [mm]	R.O.= Rated Output		
WIRING CODE			
+ Excitation	- Excitation	+Signal	-Signal
RED PIN A	BLACK PIN B	GREEN PIN C	WHITE PIN D



SPECIFICATIONS:

RATED OUTPUT	0.5 mV/V nom.
CAPACITY	SEE CHART
SAFE OVERLOAD	200% of R.O. Δ
ZERO BALANCE	$\pm 50\%$ of R.O.
EXCITATION (VDC OR VAC) *	2 MAX
BRIDGE RESISTANCE	1000 Ω nom.
NONLINEARITY	$\pm 0.5\%$ of R.O.
HYSTERESIS	$\pm 0.5\%$ of R.O.
TEMP. SHIFT ZERO	$\pm 0.03\%$ of R.O./ $^{\circ}$ F (± 0.054 of R.O./ $^{\circ}$ C) Δ
TEMP. SHIFT SPAN	$\pm 0.02\%$ of LOAD/ $^{\circ}$ F (± 0.036 of LOAD/ $^{\circ}$ C)
COMPENSATED TEMP.	60 to 160 $^{\circ}$ F (16 to 71 $^{\circ}$ C)
OPERATING TEMP	-60 to 200 $^{\circ}$ F (-51 to 93 $^{\circ}$ C)
WEIGHT (approx)	0.001 lb [0.5 g]
MATERIAL	17-4 PH.S.S.
DEFLECTION	0.00005 [0.001] nom.
CABLE: 4 PIN, 0.5MM PITCH FLEX CABLE	



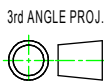
ITEM #	#	CAP	'L'	RFID
QSH02074	-01	5lb	2 [50]	NO
QSH02075	-02	10lb		
QSH02142	-03	5 lb	3 [75]	NO
QSH02143	-04	10 lb		
QSH02154	-05	5 lb		YES
QSH02155	-06	10 lb		

AVAILABLE CAPACITIES

CUSTOMER APPROVAL- COMPANY:	
CUSTOMER APPROVAL- NAME / DATE:	
REVISIONS: (Refer to dwg # revision sheet)	
A	6/11/2020

OUTLINE DRAWING

STANDARD NOTES: (Unless Otherwise Specified)
 ALL DIMENSIONS ARE IN INCHES
 DRAWING INTERPRETATION DIMS. PER ASME-Y14.5
 REMOVE BURRS AND BREAK SHARP EDGES .005 - .015
 THREADS PER HANDBOOK H-28
 DIMENSIONS ARE SHOWN AFTER PLATING



ANGLE:
 $\pm 1/2^{\circ}$
 CHAMFER:
 $\pm 5^{\circ}$
 TOLERANCE:
 .X $\pm 0.1^{\circ}$
 .XX $\pm 0.01^{\circ}$
 .XXX $\pm 0.005^{\circ}$

This drawing is submitted solely for the information and exclusive use of the original addressee. It is not to be divulged in whole or in part, by any firm or individual without written permission from:

FUTEK
 ADVANCED SENSOR TECHNOLOGY, INC.
 10 THOMAS, IRVINE, CA 92618 USA
 Phone: (949) 465-0900
 Fax: (949) 465-0905

MODEL: QLA414	DWG No.: FO1520-A
DRAWN BY: S. VOSOUGH	CREATED DATE: 11/26/2019
APPROVED BY: M. LISIAK	APPROVED DATE: 11/27/2019
CHECKED BY:	CAGE: 1X8M6 SHEET: 1 OF 1