

F1

Load cell

OPTION  II 2G Ex ib IIC T6 Gb
II 2D Ex ib IIIC T70°C Db
Certificate: TUV CY 18 ATEX 0206102 X



 Completely LASER welded

OIML R60
Reference recommendation

 Long term high stability

CE RoHS

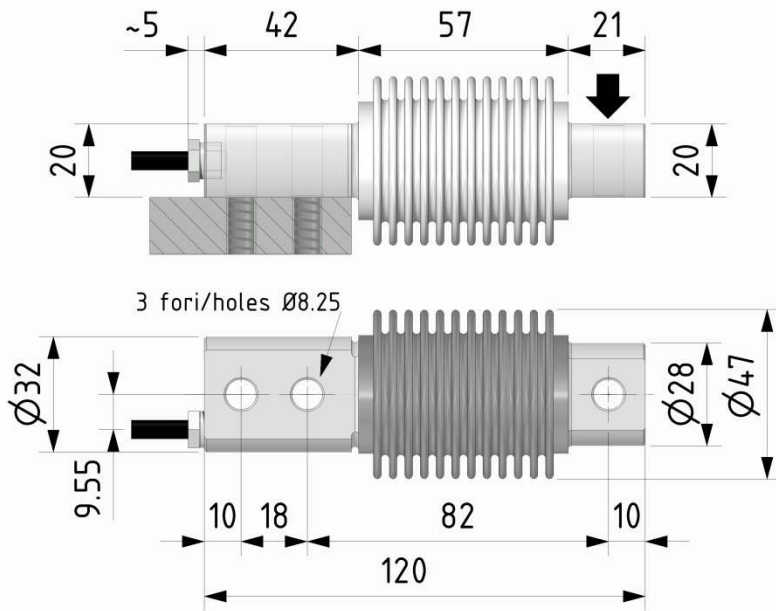
 DYNAMIC STRESSES



BENDING BEAM load cell for the measurement of static and dynamic loads.

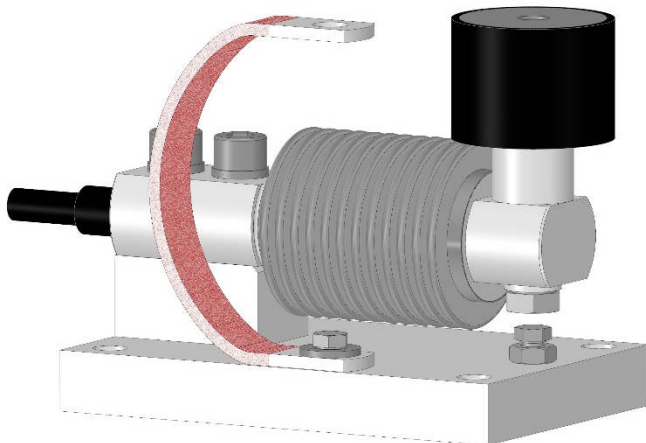
IP67

Dimensions [mm]



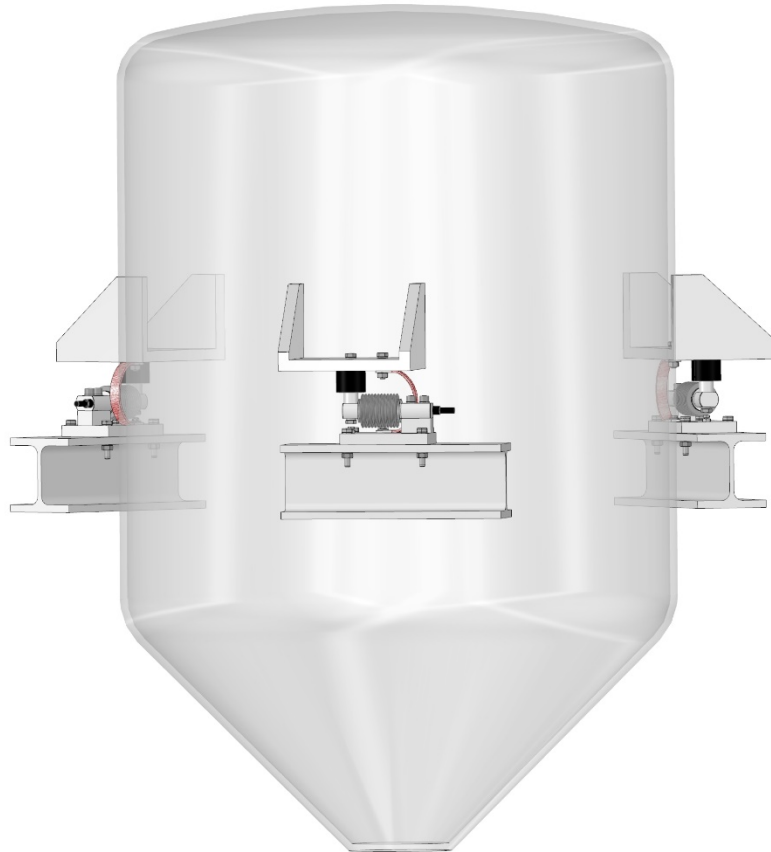
CODE (C2)	CODE (C3)	LOAD
CF12K5C25	/	2.5 kg
CF15KC25	/	5 kg
CF110KC25	CF110KC35	10 kg
CF125KC25	CF125KC35	25 kg
CF150KC25	CF150KC35	50 kg
CF1100KC25	CF1100KC35	100 kg
CF1200KC25	CF1200KC35	200 kg

Accessories

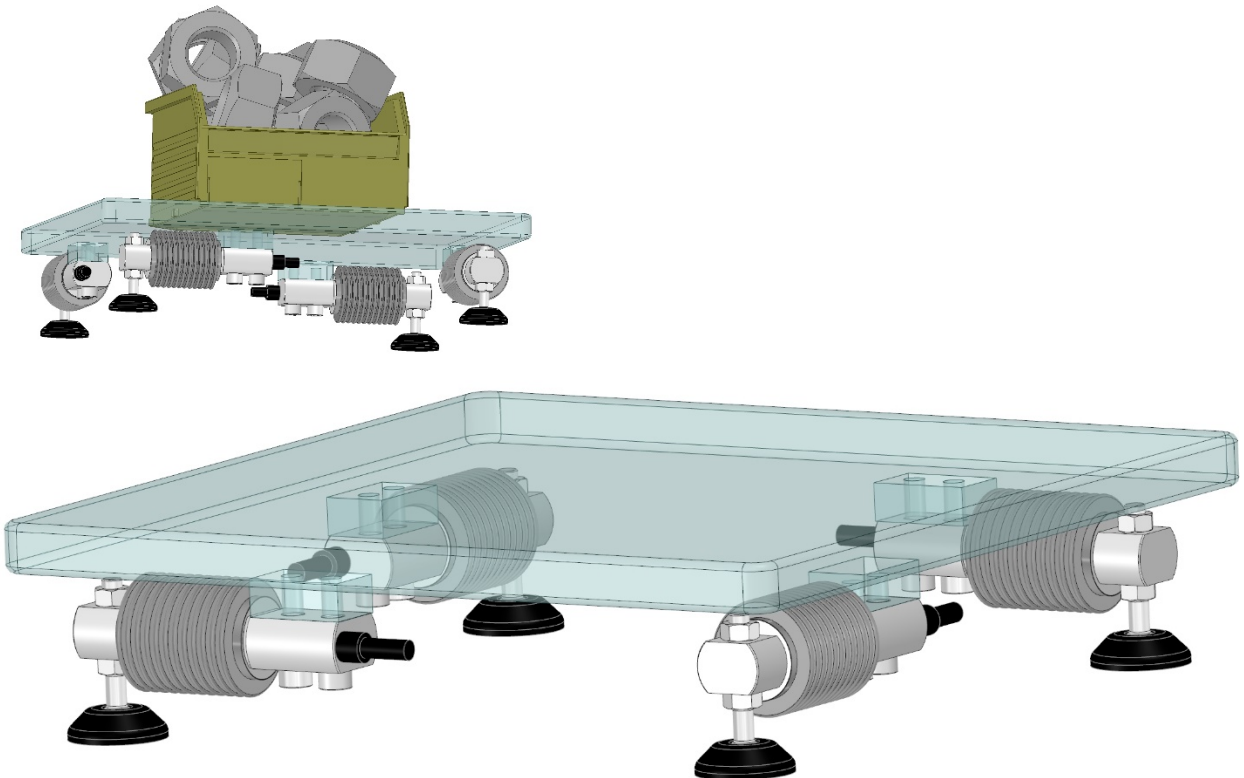


UPF1: Weighing unit

Examples of installation



Silo with 3 supporting points.



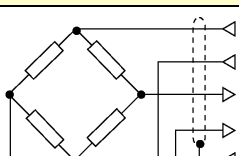
Platform with 4 supporting points with jointed feet.

Technical Data


ACCURACY CLASS: <i>OIML R60</i>	C2	C3
LEGAL DIVISIONS	2000	3000
NOMINAL LOAD (E_{max})	2.5 - 5 - 10 kg 20 - 25 - 50 kg 100 - 200 kg	10 - 20 kg 25 - 50 kg 100 - 200 kg
MIN. VERIFICATION INTERVAL (V_{min})	$E_{max} / 10000$	
COMBINED ERROR	$\leq \pm 0.026 \%$	$\leq \pm 0.020 \%$
NON-REPEATABILITY	$\leq \pm 0.012 \%$	$\leq \pm 0.010 \%$
ZERO RETURN over 30 min.	$\leq \pm 0.025 \%$	$\leq \pm 0.015 \%$
CREEP to nominal load:		
a) over 30 min.	$\leq \pm 0.026 \%$	$\leq \pm 0.012 \%$
b) over 20 and 30 min.	$\leq \pm 0.010 \%$	$\leq \pm 0.009 \%$
TEMPERATURE EFFECT (10 °C)		
a) on zero	$\leq \pm 0.025 \%$	$\leq \pm 0.012 \%$
b) on sensitivity	$\leq \pm 0.008 \%$	$\leq \pm 0.008 \%$
NOMINAL SENSITIVITY	2 mV/V	
SENSITIVITY TOLERANCE	$\leq \pm 0.1 \%$	
INPUT RESISTANCE	420 \pm 20 Ω	
OUTPUT RESISTANCE	350 \pm 2 Ω	
INSULATION RESISTANCE	> 5 G Ω	
ZERO BALANCE	$\leq \pm 1 \%$	
RECOMMENDED SUPPLY VOLTAGE	10 V	
NOMINAL SUPPLY VOLTAGE	1 - 15 V	
MAXIMUM SUPPLY VOLTAGE	18 V	
MECHANICAL LIMIT VALUES REFERRED TO NOMINAL LOAD:		
a) minimum load	0 %	
b) service load	120 %	
c) max permissible load	150 %	
d) breaking load	> 300 %	
e) max transverse load	200 %	
f) max permissible dynamic load	75 %	
DISPLACEMENT AT NOMINAL LOAD	~ 0.4 mm	
REFERENCE TEMPERATURE	+ 23 °C	
TEMPERATURE NOMINAL RANGE	-10 / +40 °C	
SERVICE TEMPERATURE	-20 / +70 °C	
STORAGE TEMPERATURE	-20 / +80 °C	
WEIGHT	~ 0.62 kg	
PROTECTION CLASS (EN 60529)	IP67	
EXECUTION MATERIAL	Stainless Steel	
CABLE LENGTH	5m	
FIXING SCREWS:		
a) diameter	M8	
b) resistance class	12.9	
c) tightening torque	20 Nm	

Acceleration of gravity $g=9.80434 \text{ m/s}^2$

Electrical Connections

Load Cell	OUTPUT	CABLE
	EXCITATION+	Red
	EXCITATION -	Black
	OUTPUT+	White
	OUTPUT-	Yellow
	-----	Shield*

* Connected to the body of the load cell.

PVC 105°C shielded cable, \varnothing 5.2mm with 4 tinned \varnothing 0.35mm² conductors.